

part of the group  
**bulmor**

**bulmor**  
*strong sideloader solutions*

***ELECTRIC***

***Multidirectional - Sideloader***



***STRONG.***

High stability  
and durability

***EFFICIENT.***

Maximum endurance  
and easy maintenance

***INTELLIGENT.***

Smart technology with  
adjustable power

A tradition of innovation and reliability.

 Tailor-made design and production



# Machinery Tradition since 1879

Long-load  
transport

Founded as Schöberl & Söhne Motoren- und Maschinenfabrik, the company specialised in the development and production of JUMBO sideloaders from the 1980s onwards, thus creating an iconic product. This significant step was followed by many more on the path to market leadership in this segment.

## Typical BULMOR

However, the company did not just develop internally but integrated the technology of the industry pioneers IRION, LANCER and SHS into its skillset. In this way, BULMOR developed its strengths into clear competitive advantages for customers and users.

- ROBUST
- EFFICIENT
- SAFE
- ECONOMICAL

# Home of the BULLS



[www.bulmor.com](http://www.bulmor.com)



Typical BULMOR: ROBUST . EFFICIENT . SAFE . ECONOMICAL

Complete safety and stability  
with long goods at high lifting heights  
thank to the one-piece NOTOXframe.

# NOTOX<sub>FRAME</sub> the heart of a BULMOR

ensures fast logistics processes



## NOTOX<sub>FRAME</sub>

**Straight mast at all times thanks to the one-piece frame**

A tiltable frame additionally allows correction of the mast and ensures stability at high lifting heights in the smallest aisle widths.

**Smooth, safe driving thanks to BULMOR pendulum compensation**

Hydraulic pendulum compensation ensures the wheels stay in constant contact with the ground and keeps the load level.

**Maintenance-free BULMOR with low-wear toothed belt drive**

A low-wear toothed belt is practically maintenance-free and allows smooth handling.

As with any vehicle, the drive concept and chassis determine the active driving characteristics.

**+30%**  
energy efficiency

BULMOR  
a symbiosis of  
hydraulics and  
electronics.

BENEFIT FROM OUR  
ENERGY-EFFICIENT VEHICLES.



Multidirectional Sideloaders | Maximum efficiency for internal good flows

## Multidirectional BMS with **Save-Plus** system

Maximum  
performance  
with minimum  
consumption.



### EMU 20 // 25 // 30

Classic Line ☆☆

The compact and versatile EMU version with 48 V battery and multidirectional steering is flexibly adaptable and shows its strength with loads of up to 3 tonnes of long goods.

Fig. BMS with longitudinal cabin

### BMS 30 // 35 // 40 // 45 // 50 // 55 // 60 // 70 // 80 // 90 // 100

Premium Line ☆☆☆

The all-rounder among the multidirectional sideloaders delivers the highest performance thanks to the 80 V Save-Plus system.

Fig. BMS with transverse cabin

Premium Line ☆☆☆

A heavy-duty multidirectional sideloader that transports even heavy loads with stability, thus ensuring safety and economy for both the goods and the driver.

Fig. BMS with full cabin

The smallest possible working aisle width can be achieved by choosing from a range of different cabins.



### New energy-efficient control technology

The innovative interaction of hydraulic and electronic components creates up to 30% more energy efficiency.

- Measurable extension of your operating times
- Less heat development even during tougher applications
- Smooth steering programme change during driving

# Universal Multidirectional Sideloader **NEW** in the team



## BMU: the universal brother of the BMS

with  
**Save-Plus  
System**

With the BMU, BULMOR has expanded its series of electric multidirectional side loaders in the 48 volt power range.

As a multidirectional side loader with true multidirectional steering, the BMU comes in platform widths from 800 to 1800 mm.

Serie	BMU 35 - 45
Lifting capacity (t)	up to 3,5 // 4 // 4,5
Aisle width	2150 - 2950 (35) 2250 - 3050 (40-45)
Width NB (mm)	1200 optional: 800-1800
Lifting height (mm)	3500 - 8000
Total length L (mm)	3230 (35) 2900 (40-45)
Well width E (mm)	1380

### Universal loader BMU 35 - 45

The BMU is an outstandingly agile and compact universal loader with multidirectional steering for handling pallets and long goods.

- PU tyres for indoor operation
- Optional elastic tyres for combined indoor and outdoor operation
- 48 volt drive
- Load capacities from 3,5 to 4,5 tonnes
- with efficient technology of the BMS series

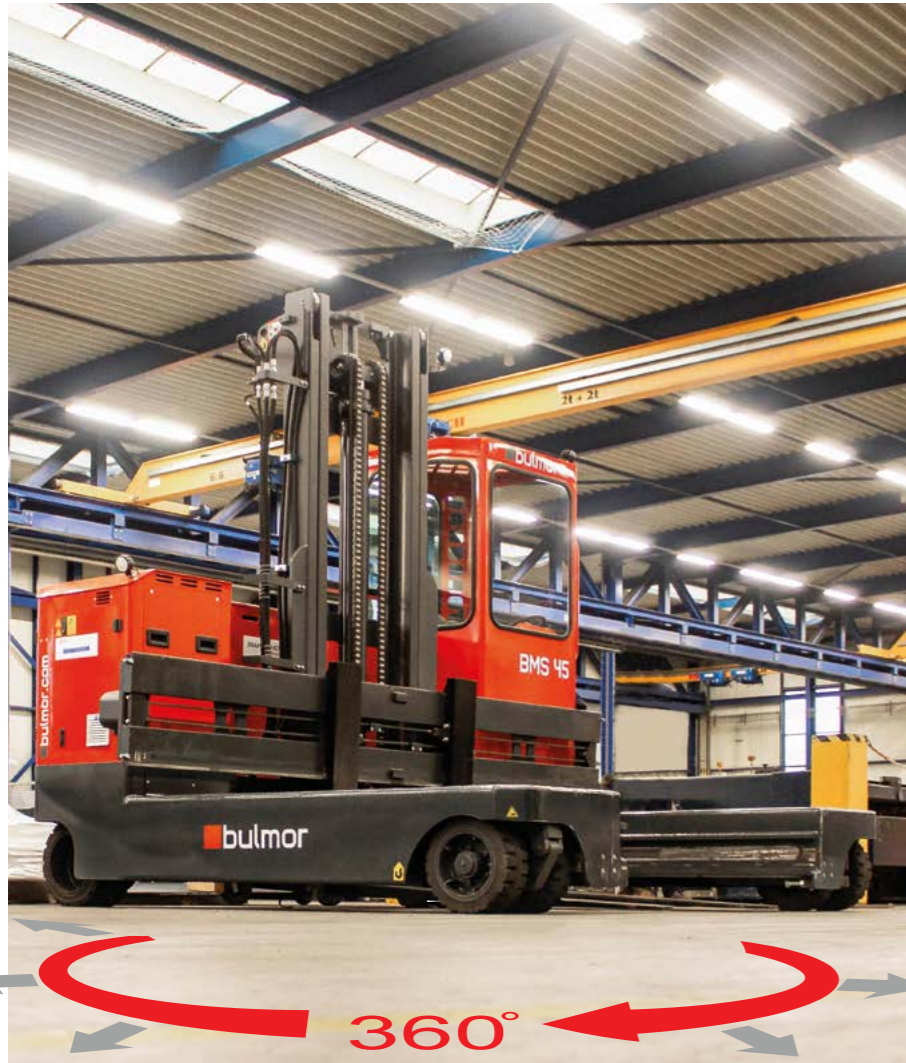
**48 volt drive**

**transport of pallets and long goods**



# A Standard you can count on.

Quality with around the clock availability.



### BULMOR INFO terminal

State-of-the-art computer technology on a BULMOR allows easy reading of driver and customer service information.

- Service and maintenance intervals
- Wheel position indicator
- Steering programme display
- Driver access authorisation by code and much more



### Operation:

A modern joystick allows sensitive operation of all hydraulic functions with millimetre precision.

### Multidirectional steering system with 12 steering programmes

**Lengthwise:** transport material quickly and safely through narrow aisles

**Widthwise:** use the loader like a conventional forklift

**Circular:** rapid turning in narrow aisles

**Diagonal:** safe loading and unloading of trucks



### Save storage space with track guidance systems

For maximum utilisation of the bearing surface, we offer mechanical track guidance via rollers or inductive track guidance.

### Minimum maintenance work thanks to BULMOR toothed belt extension system

The new BULMOR system with a low-wear toothed belt enables sensitive and smooth handling of your goods.

This design is not susceptible to dirt and re-tensioning work is almost entirely eliminated, meaning that hardly any maintenance is



**Vulkollan (PU)** for smooth industrial floors



**Elastic tyres** with or without profile for uneven floors and outdoor operation



**Tyres:** Whether you are working with smooth industrial floors, a poor standard of flooring or even using the device outdoors, protecting your floors, your machine and the health of your drivers is our priority. BULMOR recommends Vulkollan tyres (PU) for smooth industrial floors, and soft elastic tyres (EL) to protect the machine for uneven floors or outdoor operation.

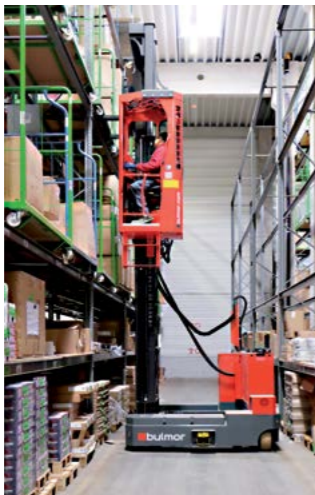
For long, heavy and bulky goods.

# A BULMOR for every application

Tailor-made solutions for indoor and outdoor use.

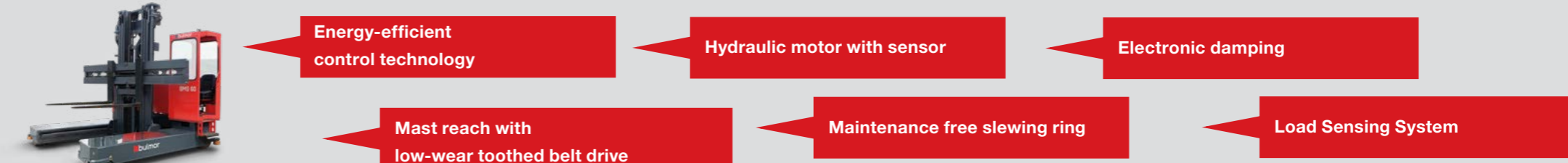
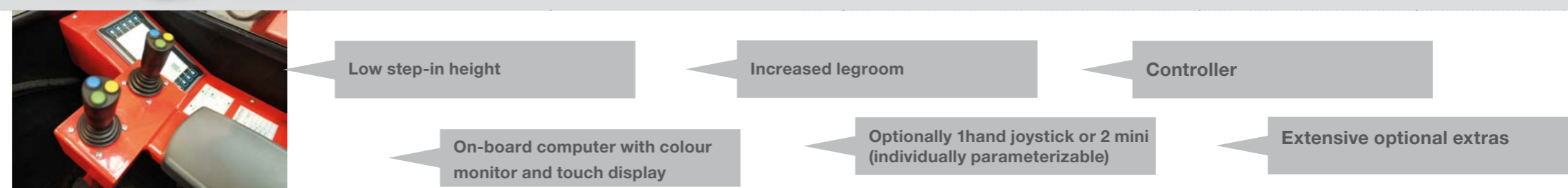
Individually designed and produced for the industries:

- WOOD TRANSPORT
- METAL TRANSPORT
- PLASTICS
- ALUMINIUM
- AUTOMOTIVE
- BUILDING MATERIAL TRANSPORT
- SHEET METAL INDUSTRY
- COILS
- TRANSPORT OF WINDOWS AND DOORS
- AIR TRAVEL



The experts in exceptionally long applications:

safe, fast and economical in various applications all over the world.

	Classic Line	Premium Line					
MULTIDIRECTIONAL SIDeloader Electric	EMU 20 // 25 // 30 Vulkollan®	BMU 35 // 40 // 45 Vulkollan® // Elastic	BMS 30 // 35 Vulkollan® // Elastic	BMS 40 // 45 Vulkollan® // Elastic	BMS 50 // 55 // 60 // 70* Vulkollan® // Elastic <small>*BMS 70 only with Vulkollan® available</small>	BMS 70 // 80 Vulkollan® // Elastic	BMS 90 // 100 Vulkollan®
Drive	48 Volt	48 Volt	80 Volt	80 Volt	80 Volt	80 Volt	80 Volt
Lifting capacity	up to 2 // 2,5 // 3 tons	up to 3,5 // 4 // 4,5 tons	up to 3 // 3,5 tons	up to 4 // 4,5 tons	up to 5 // 5,5 // 6 // 7 tons	up to 7 // 8 tons	up to 8 // 9 // 10 tons
Standard lift (h3)	3500 - 8000 mm	3500 - 8000 mm	3500 - 8000 mm	3500 - 8000 mm	3500 - 8000 mm	3500 - 8000	3500 - 8000 mm
Overall dimension (L x B x H) by NB=1200	2960 x 1950 x 2400	3230 x 1950 x 2640 (BMU 35) 2900 x 2050 x 2670 (BMU 40-45)	3230 x 1950 x 2640	3100 x 2050 x 2670	3100 x 2150 x 2670 3500 x 2150 x 2795 (Elastic) 3100 x 2200 x 2670 (VB) (BMS 70)*	3800 x 2250 x 2880	4100 x 2450 x 3250
Aisle width by NB=1200	1750-2550	2150-2950 2250-3050 (BMU 40-45)	2150 - 2950	2250 - 3050	2350 - 3150 2400 - 3200 (BMS 70)*	2450 - 3250	2650 - 3450
Load centre	600	600	600	600	600	600	600
Useable platform with GT	Standard: 1200 Optional: 800 - 1800	Standard: 1200 Optional: 800 - 1800	Standard: 1200 Optional: 800 - 1800	Standard: 1200 Optional: 800 - 2200	Standard: 1200 Optional: 800 - 2300 (1000-2300 BMS70)	Standard: 1200 Optional: 1000 - 2800	Standard: 1200 Optional: 1200 - 2800
Turning radius	1770	1900 // 1750 // 1750	1850	1850	1880 (2050 Elastic)	2100	2350
Platform height	400	400 (500 Elastic)	400 (500 Elastic)	400 (500 Elastic)	450 (575 Elastic)	600	600
Well width (E)	1380	1380	1380	1580	1620	1620	2300
Fork distance (GTL)	1250	1270	1270	1460	1460	1460	2100
Drive motor	AC-Technology 2 x 3,9 kW	AC-Technology 2 x 5 kW				AC-Technology 2 x 7,5 kW	t.b.a.
Working hydraulics	AC-Technology 1 x 11 kW	AC-Technology 1 x 21 kW	AC-Technology 1 x 18 kW optional: 1 x 28 kW	AC-Technology 1 x 28 kW		t.b.a.	
Battery	48 V up to 930 Ah	48 V up to 930 Ah	80 V up to 775 Ah	80 V up to 930 Ah	80 V up to 930 Ah	80 V - 930 Ah	80 V up to 1240 Ah
Tyres	Vulkollan® 2x ø343 x 140 (K), 4x ø250 x 80 (L) Super Elastic Tyres optional	Vulkollan® 2x ø406 x 178 (K), 4x ø285 x 100 (L) Elastic 2x ø457 x 203 // 229 BMU40-45) (K), 4x ø 406 x 152 (L)	Vulkollan® 2x ø406 x 178 (K), 4x ø285 x 100 (L) Elastic 2x ø457 x 203 (K), 4x ø406 x 152 (L)	Vulkollan® 2x ø 406 x 178 (K) , 4x ø285 x 100 (L) Elastic 2x ø457 x 229 (K) 4x ø406 x 152 (L)	Vulkollan® 2x ø406 x 178 (K) , 8x ø285 x 75 (L) Elastic 2x ø559 x 254 (K) , 4x ø457 x 203 (L) (BMS 50 //55) Elastic 2x ø559 x 305 (K) , 4x ø457 x 203 (L) (BMS 60)	Vulkollan® 2x ø711 x 254 (K) 4x ø457 x 203 (L) Elastic 2x ø711 x 305 (K) 4x ø457 x 229 (L)	Vulkollan® 4x ø406 x 203 (K), 8x ø400 x 100 (L)
Technology	AC Technology compact & mobile 12 steering system standard flexible applicable (465 up to 930 Ah) Vulkollan & Elastic Tyres						
Cabine	Can be customized with standard options						
Type of cabin	standard: Longitudinal: 670 x 1000 mm optional: Longitudinal rear entry 670 x 1000 mm Lateral cabin: 800, 850, 900 x 670 mm Lateral cabin: 800, 850, 900 x 900 mm Diagonal Diagonal cabin: 850 x 1000 mm	standard BMU 35: Lateral cabin: 670 x 1000 mm  standard BMU 40-45: Lateral cabin: 800 x 670 mm	standard: Longitudinal: 670 x 1000 mm optional: Longitudinal rear entry 670 x 1000 mm Lateral cabin: 800, 850, 900 x 670 mm Lateral cabin: 800, 850, 900 x 900 mm Diagonal cabin: 850 x 1000 mm	standard: Lateral cabin: 800 x 670 mm optional: Longitudinal: 670 x 1000 mm Longitudinal rear entry: 670 x 1000 mm Lateral cabin: 850, 900 x 670 mm Lateral cabin: 800, 850, 900 x 900 mm Diagonal cabin: 850 x 1000 mm	standard Vulkollan: Lateral cabin 900 x 670 mm standard Elastic: Lateral cabin 900 x 900 mm optional: Lateral cabin: 800, 850, 900 x 670 mm Lateral cabin: 800, 850, 900 x 900 mm Diagonal cabin: 850 x 1000 mm LK front seat: 800 x 1350 mm (NUR EB)	standard: Lateral cabin 900 x 900 mm optional: LK front seat: 800 x 1350 mm	standard: Lateral cabin: 1100 x 950 mm



# Typical BULMOR - more than others.

The machines in the BULMOR fleet stand for power and robustness, as well as efficiency and safety.

Every machine is created using the experience and genes of more than 45 years of experience in the field of forklift construction. With this strength, coupled with today's modern technical know-how, **we build smart solutions for strong operations.**

**Bulmor industries GmbH**  
Kickenau 1  
A-4320 Perg

t +43 7262 58397-0  
e [info@bulmor.com](mailto:info@bulmor.com)  
[www.bulmor.com](http://www.bulmor.com)

**Bulmor Lancer Ltd.**  
Chartmoor Road  
Leighton Buzzard  
UK-LU7 4GW Beds

t +44 1525 378 000  
e [info@bulmor.com](mailto:info@bulmor.com)  
[www.bulmor-lancer.com](http://www.bulmor-lancer.com)

**Votex Bison**  
Material Handling B.V.  
Croy 30  
NL-5653 LD Eindhoven

t +31 40 2263 219  
e [info@votex-bison.com](mailto:info@votex-bison.com)  
[www.votex-bison.com](http://www.votex-bison.com)

**Bulmor Sonderfahrzeuge GmbH**  
MKF Kompaktstapler & Sonderfahrzeuge  
August-Horch-Straße 43  
D-56751 Polch

t +49 2654 881322  
e [info@mkf-kompaktstapler.de](mailto:info@mkf-kompaktstapler.de)  
[www.mkf-kompaktstapler.de](http://www.mkf-kompaktstapler.de)

[www.bulmor.com](http://www.bulmor.com)