

DOOSAN

G60S-7/G70S-7

7-SERIES FORKLIFTS

Pneumatic LPG 6.0 to 7.0 ton capacity

Euro Stage V



Features overview

Rugged reliability has been a major part of Doosan's ethos for all of its products and the 7-Series is no different. Superb performance and high power output, thanks to the Euro Stage V PSI 4.3L LPG Engine. A strong and rigid chassis frame along with more metal than plastic design ensures that Doosan is the best choice for your application.

MAXIMUM PRODUCTIVITY

Well proven and reliable Doosan PSI engines and components

Well-tested load-sensing hydraulic system

Oil-cooled disc brakes

SAFETY

Operating Sensing System

Optimum Pedal System

Excellent visibility

LED lights (optional)

OPTIMAL ERGONOMICS

Heater and air conditioning

Comfortable cabin

Premium seats (optional)



EXCELLENT RELIABILITY

Improved inside air flow

Robust chassis

Durable transmission

Full floating driveaxle

GREAT SERVICEABILITY

Swing out and down LPG Cradle - Single / Dual

Easy to access main components

Locking type gas spring for hood

Maximum Productivity



Well proven and reliable Doosan PSI engines and components

NEW

The superior engine performance is driven by an ECU that integrates and coordinates all critical functions including: governor, variable ignition timing, air-fuel ratio control and engine protection.

Oil-cooled disc brakes

Oil cooled disc brakes are standard on all 7-series. This enclosed brake system eliminates outside contamination, significantly extending the brake life by up to 5 times compared to conventional shoe brakes.



Well-tested load-sensing hydraulic system

All Doosan forklifts are equipped with a proven load-sensing hydraulic system, which provides increased fuel efficiency and better overall performance.



Safety



Operator Sensing System (OSS)

- The truck will not move without an operator in the seat.
- The lift and lower function is disabled if the operator is not in the seat.
- The tilt function will be locked if no operator is in the seat.
- An alarm will sound if the operator leaves the seat without applying the parking brake.
- The seat belt warning light on dashboard reminds the operator to fasten his seat belt.



Optimum pedal system

This pedal system will reduce the operator's fatigue and provide the best driving experience. Especially, the new electronic accelerator will provide the operator with secure and exact speed control.



Panoramic mirror **OPTION**

The panoramic mirror offers a wide view to the rear and greatly improves driving safety.

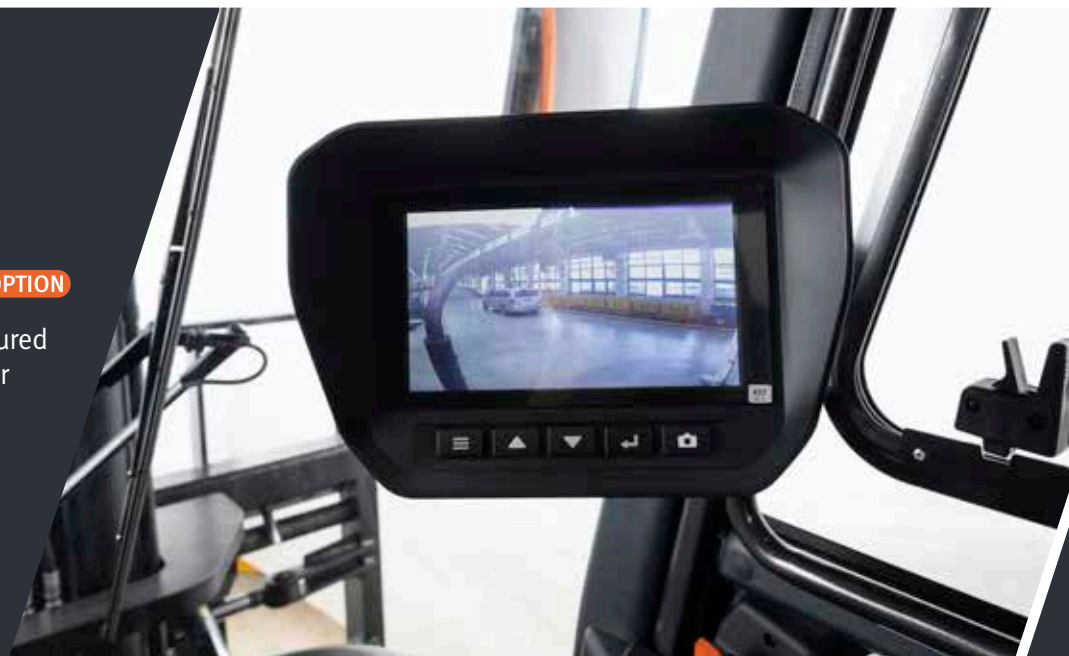


LED lights **OPTION**

LED lights give greater visibility in darker conditions and last much longer than conventional light bulbs.

Rear view camera **OPTION**

Workplace safety is ensured by maximizing front/rear visibility.



Excellent visibility

Centered seat for better visibility. Wide visibility without distortion.



Optimal Ergonomics



Instrument panel

Engine coolant temperature, transmission oil temperature, speedometer, fuel level gauge and hour meter keeps the operator aware of the machine's working conditions. Engine oil pressure, alternator voltage, water separator gauge and pre-heater illuminates to alert operator to any problem.



Anti slip step plate

Increase safety when the operator enters the forklift especially in snowy weather.



Spacious leg room and operator comfort

The neat and wide-open floorboard provides the operator with plenty of foot room to make entry and exit a breeze.



Premium seats OPTION

Designed with a low-profile mechanical suspension that significantly reduces vibrations, it helps you stay comfortable, no matter how rough the day gets.



Convenience package

Deck mounted control valve levers simplify hydraulic actuation. Convenience tray keeps paper work and supplies organized and handy.



Zeus cabin

The cabin provides the operator not only great comfort but also higher productivity with ergonomically design features. Doosan guarantees the highest quality of cabin and its components.

Parking lever is positioned on the left side of the seat to make it more convenient to use.



Low noise level

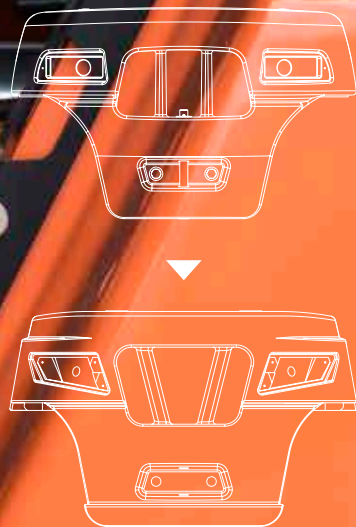
Very low noise and vibration level inside the cabin for high driving comfort.

Excellent reliability & serviceability

Improve operator's safety and convenience with locking function

Counterweight

Increased radiator capacity by improving inside air flow. The counterweight shows the identity of Doosan 7-Series IC truck with its dynamic concept design.



Hydrostatic steering system

No mechanical connections between steering wheel and steeraxle for reduced maintenance. 8 grease zerks for proper lubrication. Sealed tapered roller bearings offer protection against contamination and in high impact applications. Provides low effort steering with quick steering response.



Swing out and down LPG Cradle - Single / Dual

Standard swing out and down LPG cradle frees the LPG tank from over the counterweight and lowers the tank on a stable platform to minimize arm and back strain for even simplifies tank installation and removal.



Full floating driveaxle

The strong one-piece cast housing keeps the axle components aligned. The high tensile strength alloy steel axle shafts extends axle lift while splined side gear and drive wheel hub gears transmit high torque to the drive wheels.



Easy to check

Possible to check transmission oil easily through the window located under the seat box. Easy to check the engine diagnostics.



Easy to access

- Integrated electrical components
- Wide hood opening range for best accessibility
- Great location of fuel filter for serviceability

New air cleaner

A large capacity and dual elements air cleaner makes the Doosan 7-series more durable.



Reach Max Drive Speed

LIFTING YOUR DREAMS



Main Specifications

Engine manufacturer	
Engine type	
Engine power according to DIN ISO1585	kW
Rated speed	min-1
Max torque	N•m
Travel speed, loaded/unloaded	km/h
Lift speed, loaded/unloaded	mm/s
Drawbar pull, loaded (@ 1.6km/h)	kg
Gradeability, loaded(@ 1.6km/h)	%
Ground clearance, loaded, below mast	mm
Ground clearance, center of wheelbase	mm
Load Distance: center of driveaxle to fork	mm
Wheelbase	mm
Service weight, unloaded	kg
Height of seat	mm
Length to forkface	mm
Overall width	mm
Turning radius	mm

	G60S-7	G70S-7
	Doosan	Doosan
	PSI 4.3L	PSI 4.3L
	70	70
	2,500	2,500
	283.9/1,800	283.9/1,800
	22.6/23.7	22.5/23.4
	380/410	380/410
	4,262	4,236
	30	26.5
	176	176
	205	205
	632	632
	2,300	2,300
	8,745	9,425
	1,455	1,455
	3,618	3,697
	2,108	2,108
	3,380	3,430

Standard Features and Optional Extras

SAFETY

Direction lever function	Standard
Mast lowering interlock	Standard
Operator Sensing System (OSS)	Standard
Anti-clinching type orange seat belt	Standard
Autoshift controller	Standard
Anti-slip step plate	Standard
Combination lamps (LED)	Option
Panoramic rear view mirror	Option
Rear view camera	Option
Strobe light	Option
Safety light	Option
Back-up buzzer	Option
Ground speed control	Option

ERGONOMICS

Adjustable steering column	Standard
Integrated instrument panel	Standard
Full cabin (ZEUS) with heater or airconditioner - Manually tiltable	Option
Premium suspension seat	Option
Steering wheel knob	Option
Power Jack	Option

* Remark : This list is based on factory data. Standard or optional can vary for specific countries.

PRODUCTIVITY

Electric controlled LPG engine	Standard
Pedal location (accelerator, brake and inching)	Standard
Inching pedal	Standard
Swing out and down LPG cradle - Single LPG tank	Standard

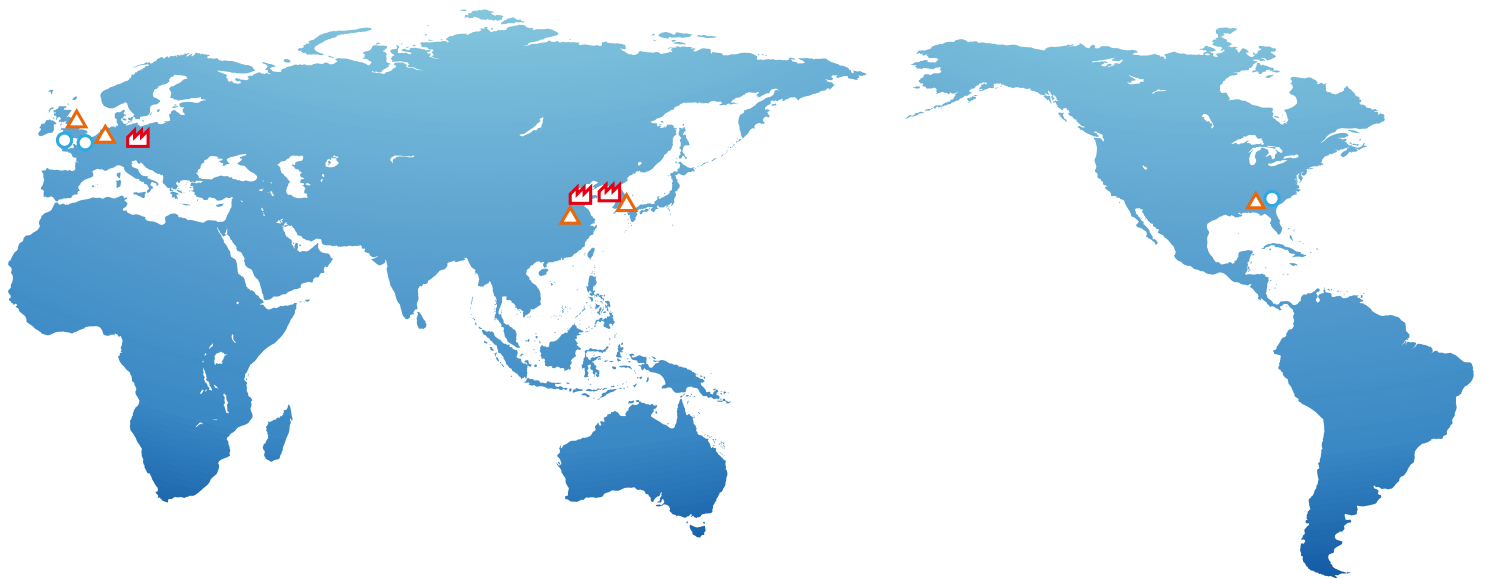
RELIABILITY




Use waterproof connectors	Standard
Dual element air cleaner	Standard
Rigid driveaxle (w/ ODB)	Standard
Pre-cleaner	Option

SERVICEABILITY

Integrated electric components (relays and fuses)	Standard
Easy to access to service components through trap doors	Standard
Wide hood open range	Standard

Standard
Option



-  Production Subsidiary
-  Sales Subsidiary
-  Parts Depot Center

DOOSAN

Doosan Industrial Vehicle Europe nv
Europark-Noord 36A
9100 Sint-Niklaas
Belgium
Tel.: +32 3 760 09 87
Fax: +32 3 760 09 89
Website : www.doosan-iv.eu

EUG60S9-220114v2EN (January 2022)

Authorized Dealer